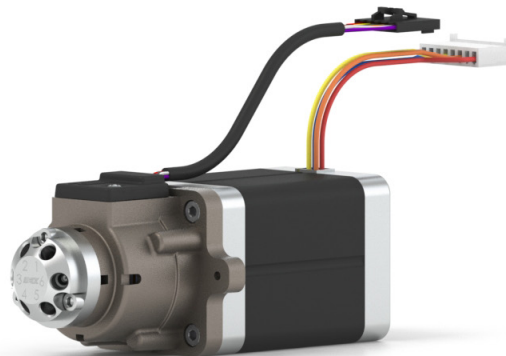


New CV Series 2-Position, 6-Port Valve

For UHPLC

Our new CV Series 2-position, 6-port valve for UHPLC applications is now available. Compared to traditional valves, the CV series valve features a full pH universal rotor seal material, 30% smaller in length and has a faster injection speed to minimize injection pressure drop. You get better performance and greater flexibility all in one economic package.

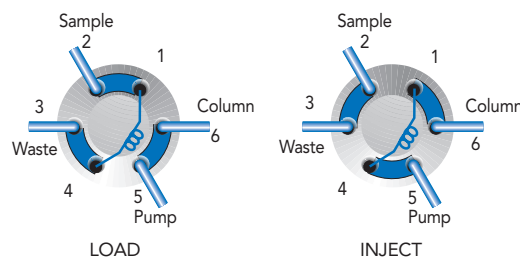


Specifications

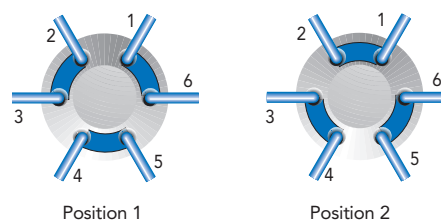
	CV720-100	CV721-100
Liquid Contacts	SPC-3, RPC-17	SPC-3, RPC-17
Connections	Accepts 10-32 male threaded fittings	Accepts 10-32 male threaded fittings
Flow Passage Diameters	Stator: 0.20 mm (0.008"), Rotor Seal: 0.25 mm (0.010") per groove	Stator: 0.20 mm (0.008"), Rotor Seal: 0.25 mm (0.010") per groove
Volume in Flow Passages	Stator: 0.08 µL per hole, Rotor Seal: 0.06 µL per groove	Stator: 0.08 µL per hole, Rotor Seal: 0.06 µL per groove
Port to Port Volume	0.22 µL	0.22 µL, 0.23 µL (via MBB groove)
Maximum Pressure	1240 bar (18,000 psi, 124 MPa)	1240 bar (18,000 psi, 124 MPa)

Dimension comparison with other valve models

Model	New CV Series	TitanHT™
Dimension	1.94 (mounting hole distance) x 4.21 x 1.65 in. [49.28 x 106.81 x 41.96 mm]	2.23 x 6.41 x 1.83 in. [56.6 x 162.8 x 46.6 mm]



Flow path of CV721-100



Flow path of CV720-100

**SMALLER
FOOTPRINT**

18,000 PSI

**FASTER
INJECTION**