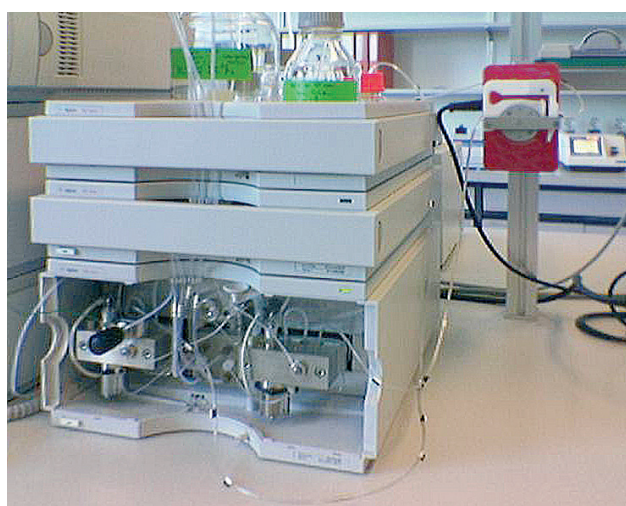


Rear-seal Washing

for liquid chromatography

HPLC Rear-seal washing system with MS/CA Pump

- For continuously rinsing
- Better reliability with concentrated buffer solutions (above 0.01M)



Flowrate

0.021 – 26 ml/min

NOTE

Application

Many liquid chromatographers need to use mobile phase buffers to improve chromatography, but are concerned about the impact of buffers on their pumps. Buffers are used to adjust the mobile phase pH for analysis of ionic or ionizable compounds. They help to ensure reproducible results and symmetric peaks. But as the organic percentage increases during a solvent gradient, buffer salts may precipitate. Once salts crystallize, they reduce the lifetime of seals and pistons, and that means downtime. When using highly concentrated buffer solutions, continuously rinsing the back of the piston seal is recommended to remove salt crystals and prolong the life of the seal. To solve this problem, ISMATEC introduces the MS-CA peristaltic pump for better reliability with concentrated (above 0.01 M) buffer solutions.

Specification 2 channel MS/CA

Motor	Synchronous
Speed	20, 40 or 60 rpm
Rollers	6 or 8
Power consumption	8 W
Power supply	230VAC (50/60Hz) 115VAC (50/60Hz)
Depth/Width/Height	125x88x135 mm
Order No.	ISM 847